

Hove Station Footbridge

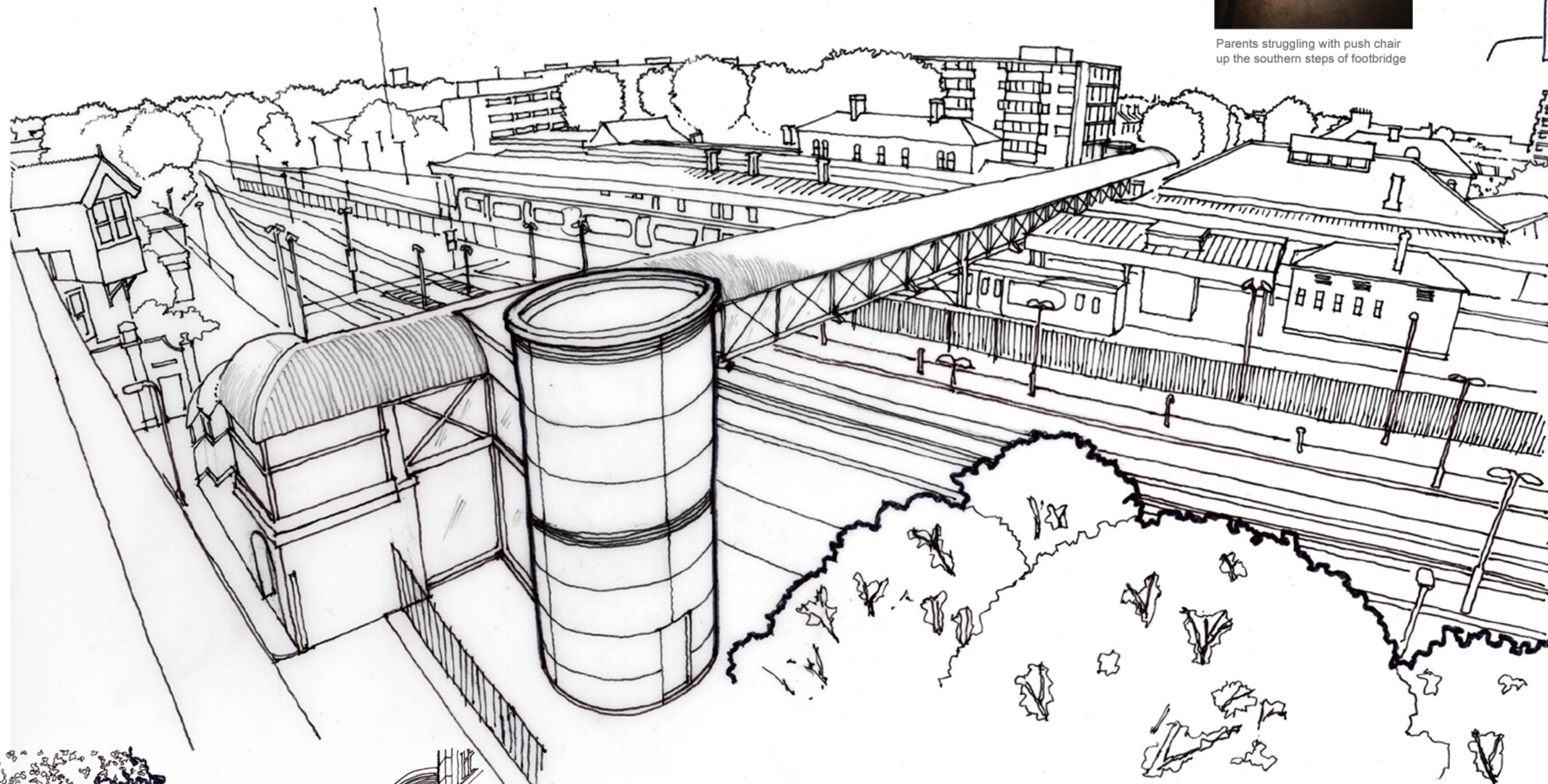
This is a conceptual idea to restore & modernise the pedestrian access footbridge at Hove station



Parents struggling with push chair up the southern steps of footbridge



View from Station Approach towards Hove station

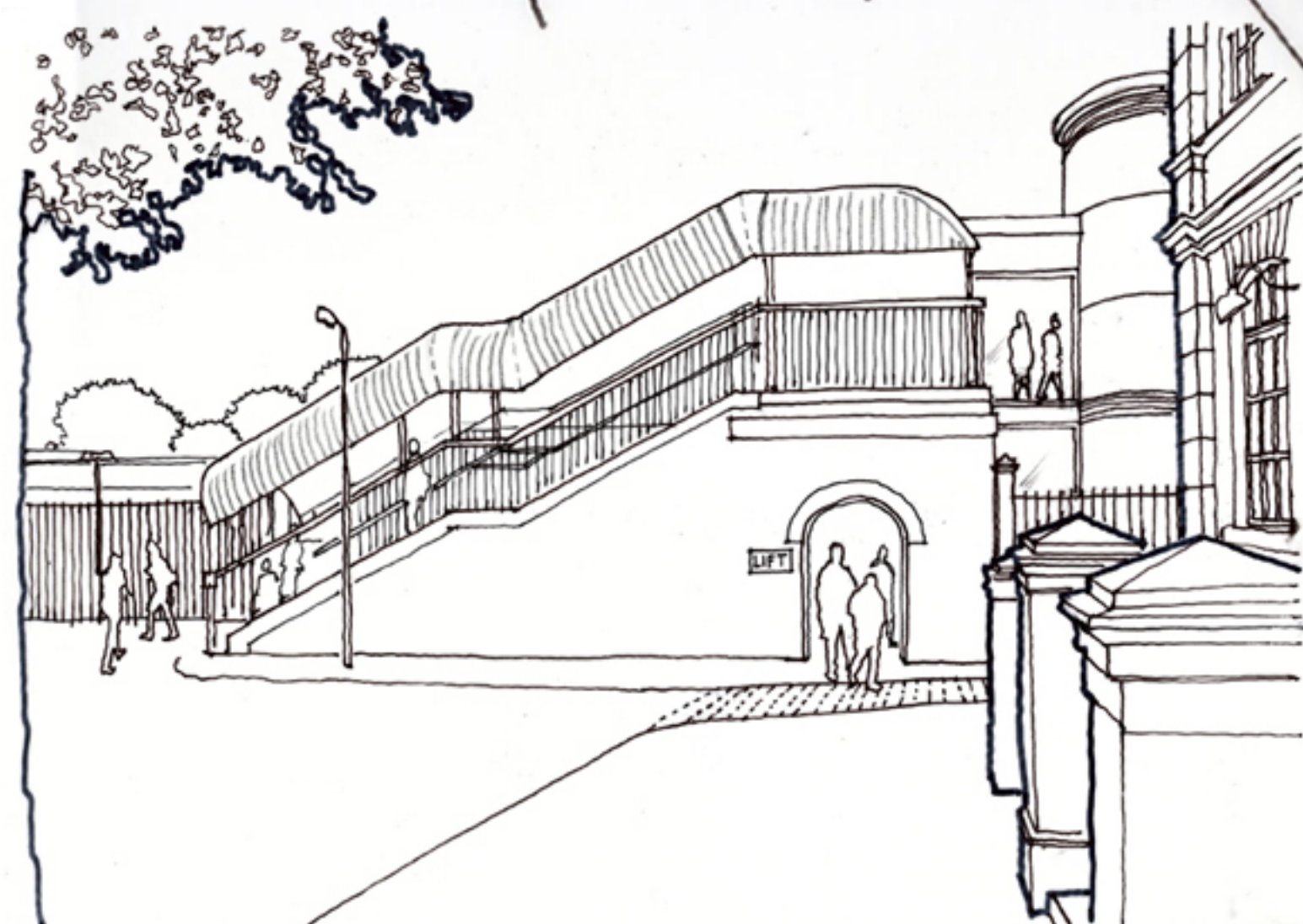


Description

The footbridge maintains a historic Public Right of Way for pedestrians from the North of the station.

Primarily this proposal extends its use to those with mobility issues, for whom the stairs are a barrier, but which will also serve those with buggies and bicycles. It requires the active involvement of the rail authorities to make this possible.

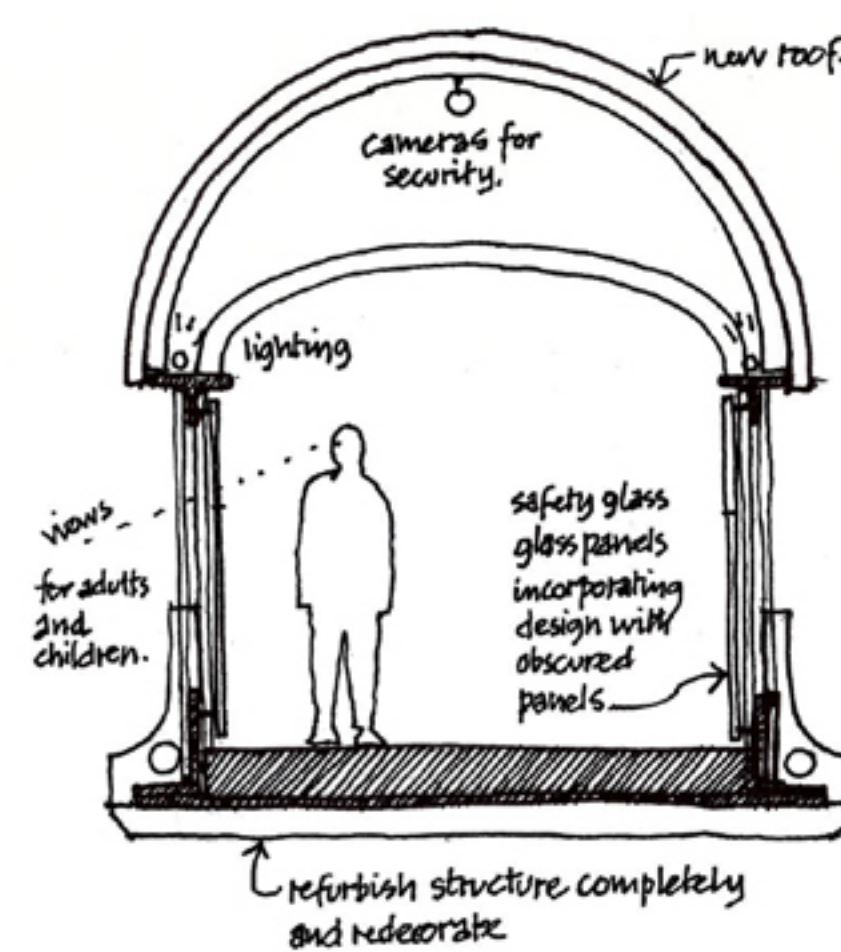
Secondarily the station is a major transport hub and reflects on the city as a first impression for visitors and everyone else on a daily basis. A restored structure which is a pleasure to use will not attract antisocial behaviour, vandalism and graffiti in the same way and will enhance the architectural quality of it as a linked structure - currently badly neglected.



View from Hove Park Villas towards lift entrance



Current Condition of Footbridge



Section of footbridge

